

Rapid Service Station, NE9 & TD Supplementary Information

1. Gateshead Council's Statement of Licensing Policy

Gateshead Council's Statement of Licensing Policy states, "The Licensing Authority will normally apply stricter conditions, including controls on licensing hours, where licensed premises are in residential areas. The Licensing Authority will expect to see that applicants have considered the impact that the following factors may have on the potential for public nuisance:

- The location of premises and proximity to residential and other noise sensitive premises
- The hours of opening, particularly between 23:00 and 07:00 hours"

It also states, "It is expected that premises whose primary activity is off licence sales will not normally be open between 23:00 and 07:00 hours. Applicants wishing to operate beyond 23:00 hours will need to demonstrate to the satisfaction of the Licensing Authority, in their operating schedule, that there will be no significant disturbance to members of the public living, working or otherwise engaged in normal activity around the premises concerned."

I do not consider that the operating schedule provides sufficient detail in these respects.

2. Alcohol related harm in Gateshead and the local area

The harm experienced across Gateshead is highlighted in the following statistics:

- Gateshead currently has the 3rd highest rate of alcohol related admissions (persons, narrow) to hospital in England
- Since 2008/09 the rate of admissions to hospital for alcohol related conditions has increased by 23.63%
- Gateshead has the highest rate for alcohol related hospital admissions in the North East (males)
- Since 2008/09 the rate of admissions to hospital for alcohol related conditions for females has increased by 34.33%. The projected trend is for this indicator to continue to increase.

Figure 1: Alcohol related violent crime (Gateshead 11.5, LSOA 6.9, neighbour 22.2 per 1,000, 2013-15) NB. Green dot, licensed premises

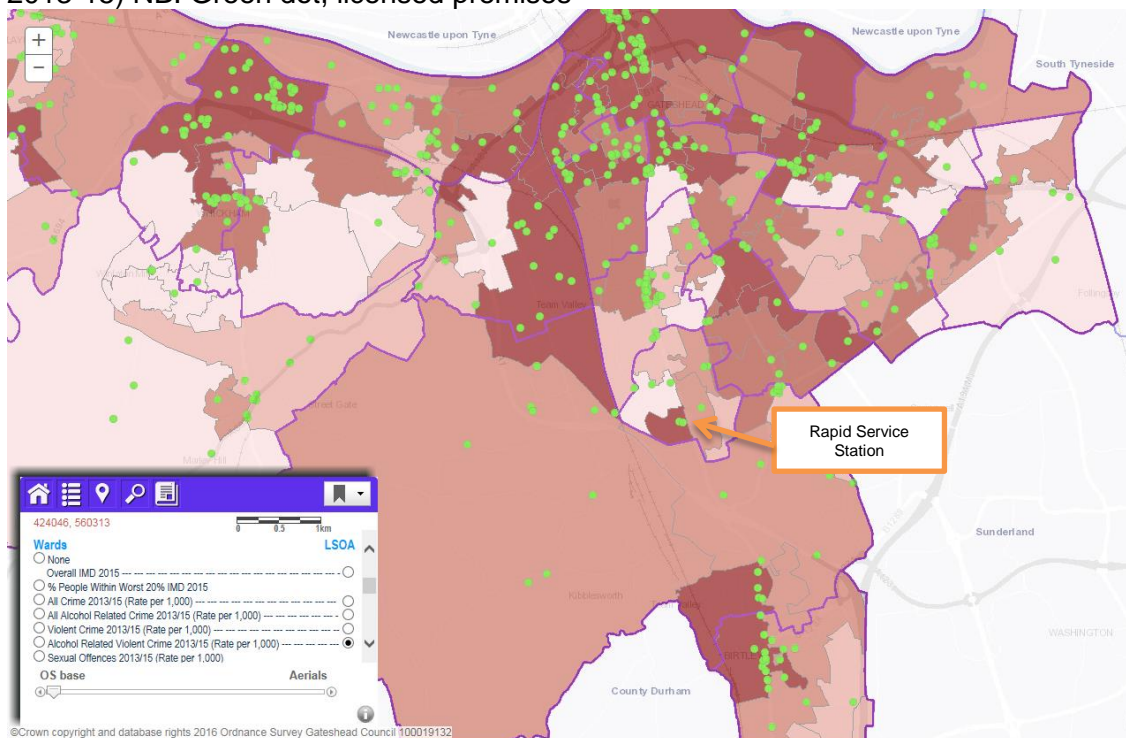


Figure 2: Police report domestic violence incidents (Gateshead 25.4, LSOA 26.7, neighbour 39.4 per 1,000, 2014/15)

- 43% of domestic abuse crimes in Gateshead involve alcohol
- Alcohol-fuelled domestic violence is more likely to result in victim injury and the need for medical care (BMA, 2008)

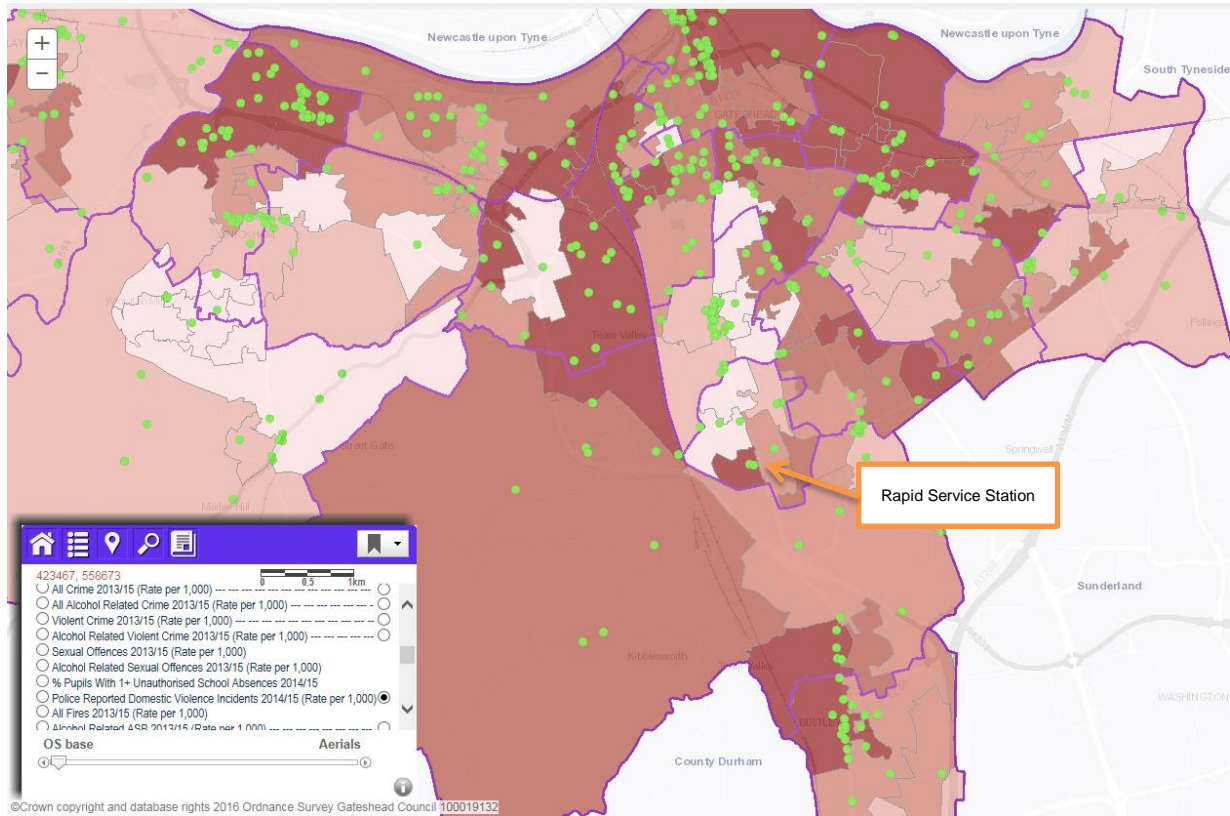


Figure 3: Alcohol related anti-social behaviour (Gateshead 13.8, LSOA 5.3, neighbour 17.2 per 1,000, 2013/15)

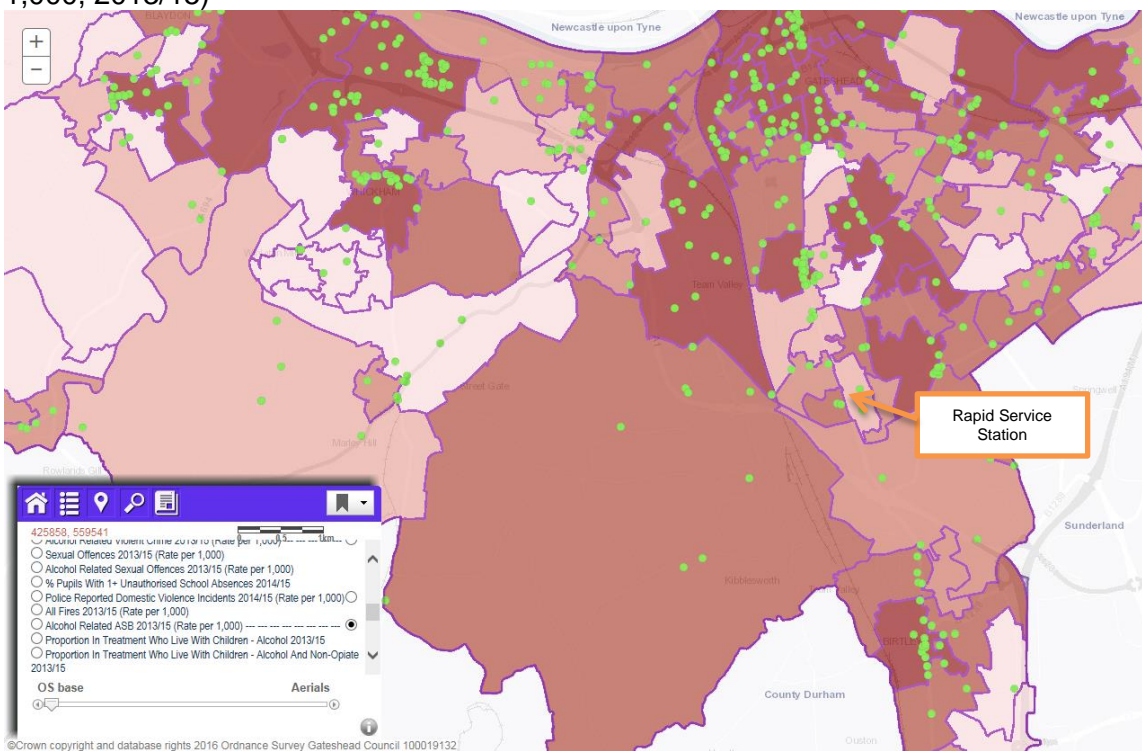


Figure 4: Alcohol related ambulance call outs (Gateshead 6.4, Chowdene 6.5 per 1,000)

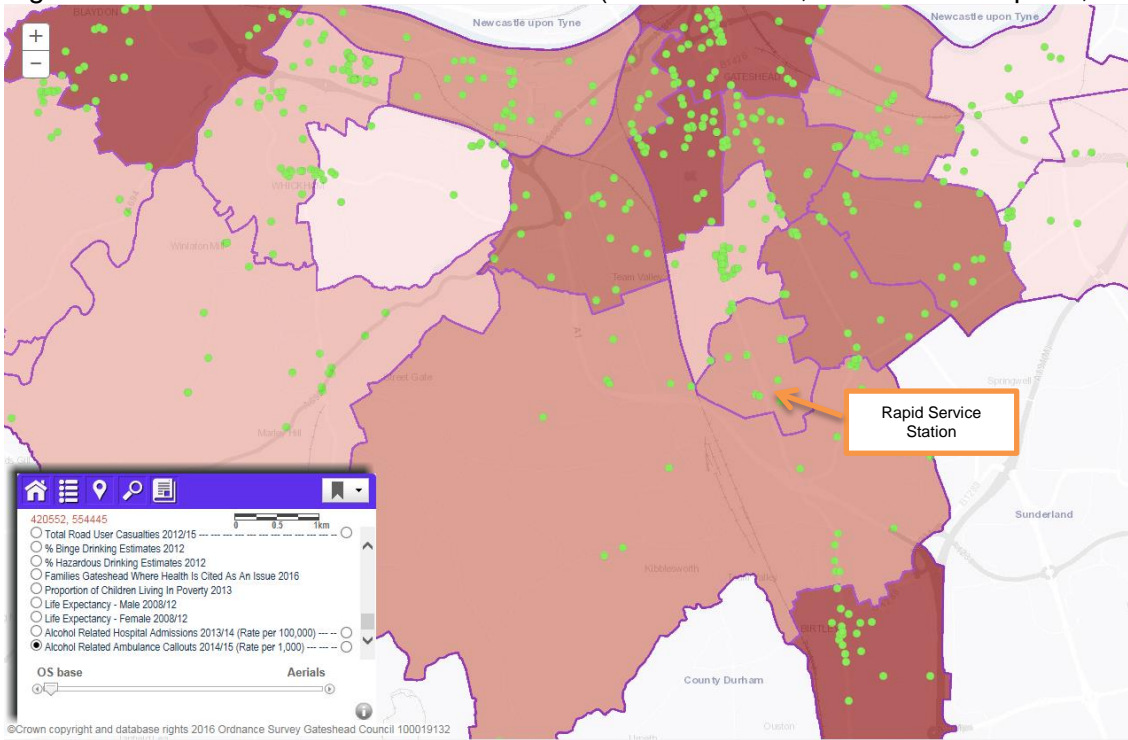
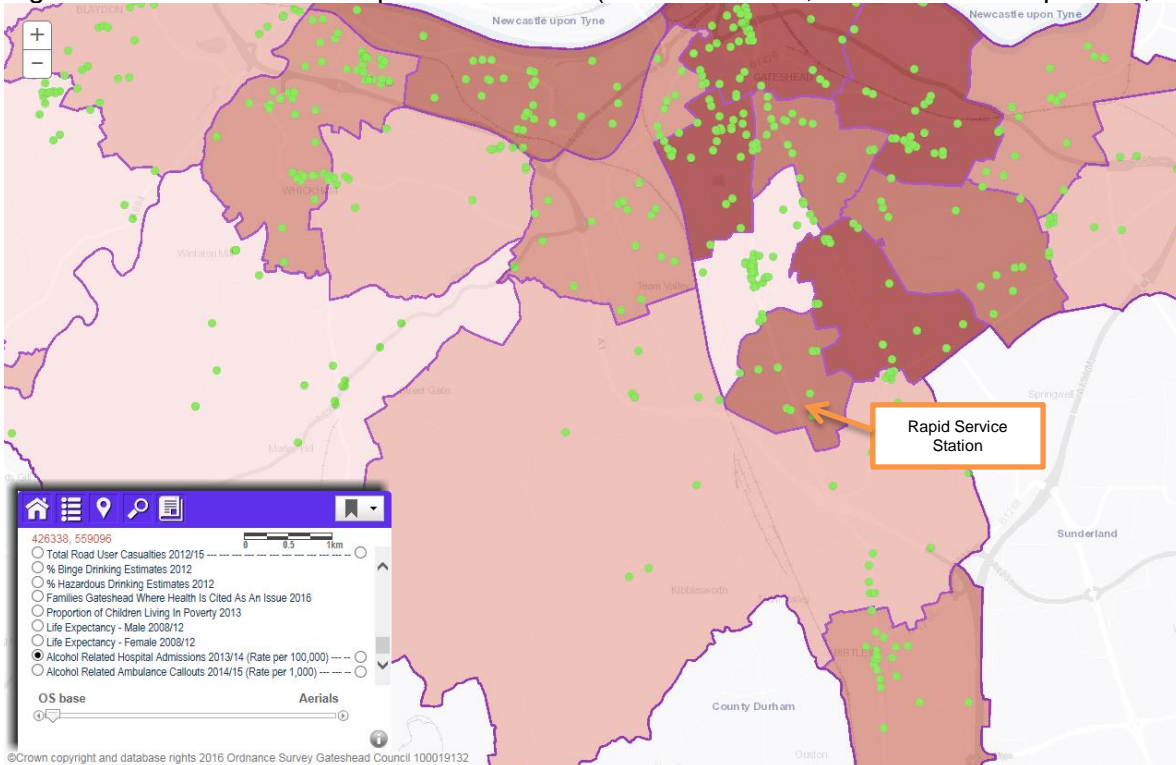


Figure 5: Alcohol related hospital admissions (Gateshead 850, Chowdene 1167 per 100,000)



3. Peak times of demand on our emergency services

Figure 6: Alcohol Related Incidents over a 24 hour period

Incidents by Time and Local Authority

Local Authority ● Gateshead

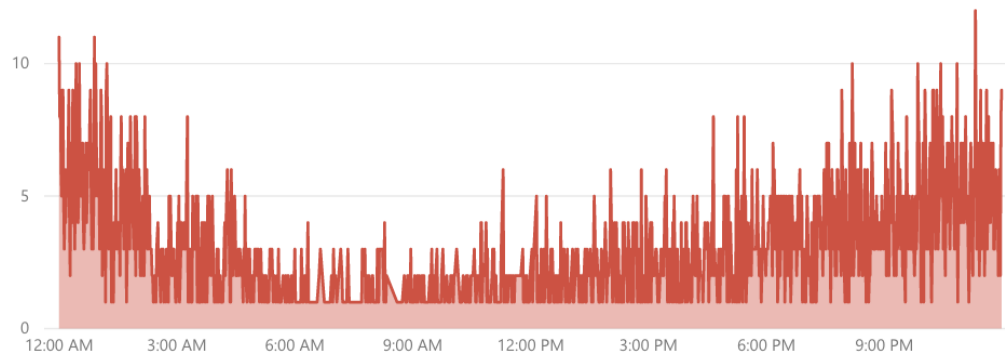


Figure 7: Alcohol related crime over a 24 hour period

Crimes by Time and Local Authority

Local Authority ● Gateshead



Figure 8: Gateshead's Alcohol Related Ambulance Call Outs (North East Ambulance Service – NHS Foundation Trust, 2016-17)

Alcohol Related Ambulance Call Outs 2016/17

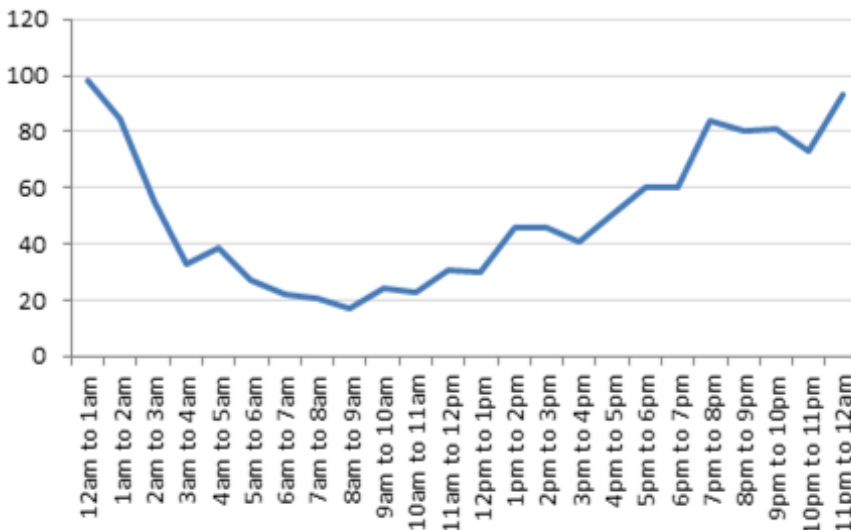


Figure 9: Gateshead Alcohol Related Ambulance Call Outs (North East Ambulance Service – NHS Foundation Trust, 2016-17)

Alcohol Related Ambulance Call Outs 2015/16

